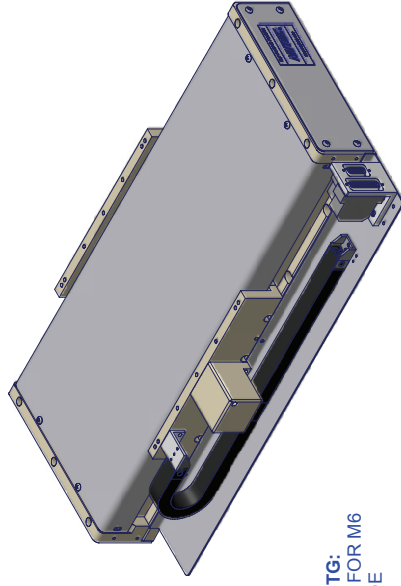
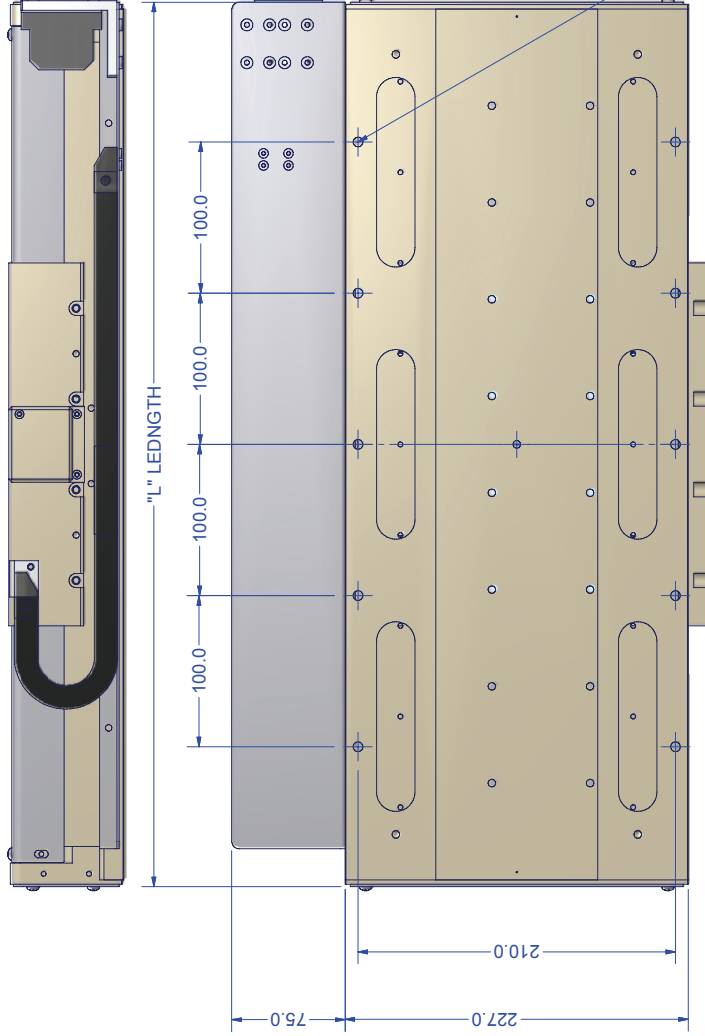


LINEAX 8

MODEL	Nominal Travel	Max Travel Limit to Limit	Soft Crash Travel	"L" Length
LX-8125	125 mm / 5"	128 mm	138 mm	464 mm
LX-8250	250 mm / 10"	256 mm	266 mm	585 mm
LX-8375	375 mm / 15"	384 mm	394 mm	713 mm
LX-8500	500 mm / 20"	512 mm	522 mm	841 mm
LX-8625	625 mm / 25"	640 mm	650 mm	969 mm
LX-8750	750 mm / 30"	768 mm	778 mm	1097 mm
LX-8875	875 mm / 35"	896 mm	906 mm	1225 mm
LX-81000	1000 mm / 40"	1024 mm	1034 mm	1353 mm



The foregoing presentation is a non-binding concept for presentation only, submitted for the purpose of soliciting business. Any and all items are changeable and reconfigurable. All data, ideas, concepts, specifications, designs and other pertinent product definitions are proprietary to NUTEC. They are submitted to the recipient in confidence. NUTEC retains all intellectual property rights to product design and concept. Deer Park - New York October 2003

UNLESS OTHERWISE SPECIFIED DIMENSIONS ARE IN MILLIMETERS

1 PL. DECIMALS ± .1MM
2 PL. DECIMALS ± .05MM
ANGLES ± 1/2°

MATERIAL: RHS
FINISH: ISSUED

PROJECT NO. LX8
APPROVALS DATE
DRAWN YYO
CHECKED RHS
ISSUED

SCALE: SHEET 1 OF 1

NUTEC
Lineax 8

SIZE: LX8
DWG NO. LX8
REV D